

LIFESTYLE APARTHOTEL TURING LOCKE OPENS IN THE HEART OF EDDINGTON, CAMBRIDGE.

Pioneering lifestyle aparthotel brand, Locke, opens Turing Locke alongside the UK's first Hyatt Centric hotel and new food and drink destinations KOTA and Dutch.



An exterior courtyard view and apartment at Turing Locke.

4 October 2021. Pioneering lifestyle aparthotel brand Locke has today officially opened [Turing Locke](#) in the heart of the sustainable new neighbourhood of Eddington, Cambridge.

Named after the revolutionary computer scientist Alan Turing, Turing Locke comprises 180 stylish apartments (including one- and two-bedroom apartments, up to 74sqm), which each feature Locke's signature fully fitted kitchens, living and dining space.

The development is shared with the 150-room Hyatt Centric Cambridge – the first opening of the Hyatt Centric lifestyle brand in the UK. It also includes an all-day restaurant, cocktail bar, coffee shop, retail space, co-working area, gym and meeting rooms, along with a seasonal rooftop terrace and central landscaped courtyard.

Designed by Stirling Prize-winning architects dRMM and internationally recognised design studio AvroKO, Turing Locke takes its design cues from the avant-garde movements established in Cambridge. Sustainability has also been a central focus in the design and development of Turing Locke, which features on-site renewable energy sources, biodiverse landscaping, and responsibly sourced furniture, lighting and timber.

Martin Newbould, General Manager of Turing Locke, said: "We are thrilled to open Turing Locke and welcome the Cambridge community through our doors. It is an honour to be part of Cambridge's rich and diverse history and contribute to one of the biggest centres for knowledge in the world. Our aspiration is to create a new destination in the heart of Eddington, where locals and guests alike can congregate to work, share ideas and meet like-minded people."

Locke has established itself as 'one-to-watch' in the hospitality industry, paving the way with its new hybrid aparthotel concept, which combines the design and experience typical of a contemporary lifestyle hotel, with the space and facilities of a serviced apartment. Each of Turing Locke's apartments feature fully fitted kitchens, living and dining space, making it attractive to a wide range of travellers, from business to leisure, groups and events, as well as short-, mid- and long-stays.

A sustainably conscious destination in the heart of the new neighbourhood of Eddington, Cambridge.

Just a 15-minute bike ride from the historical city centre, Turing Locke will serve as a focal point for the new community of Eddington – where visitors and locals alike can enjoy these exceptional new facilities.

Eddington has been developed by the University of Cambridge as an exemplar of sustainable living. Unique infrastructure around Eddington, such as the communal underground recycling system, the purpose-built lakes for rainwater harvesting, as well as generous open spaces, parklands and sports pitches, all help residents to live in a sustainable and communal environment.

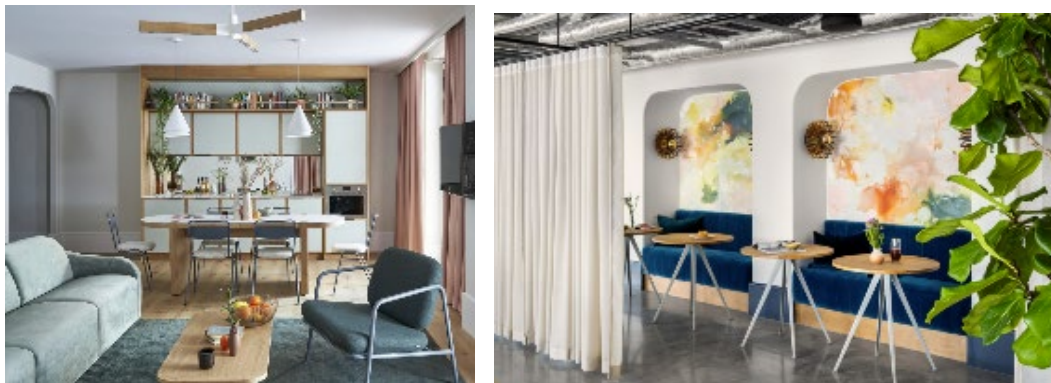
Turing Locke has embedded forward-thinking sustainable practices into its architecture and design and has reduced its carbon emissions by 20% using renewable energy sources – targeting BREEAM Excellent certification.

Other sustainable initiatives include:

- 80% of the development's roof space is occupied by solar panels to assist with the energy used by the hotel, feeding back any leftover back to the Grid.
- Biodiversity has been enhanced with large landscaped central courtyard, which hosts a variety of plant species, as well as planters, bird and bat boxes to provide an improved habitat for animals and insects.
- Sustainable modes of transport are readily available to guests and locals, including 200 cycle parking spaces, plus 20 electrical vehicle charging spaces in the car park.

As part of a broader brand-wide initiative, Locke has partnered with climate positive procurement consultancy Dodds & Shute to source furniture, lighting, and timber from responsible suppliers. As a result of the collaboration, Locke has offset 116.53 tonnes of carbon emissions – equivalent to protecting 4,307 trees.

Designed by Stirling Prize-winning architects dRMM and internationally recognised interior studio AvroKO.



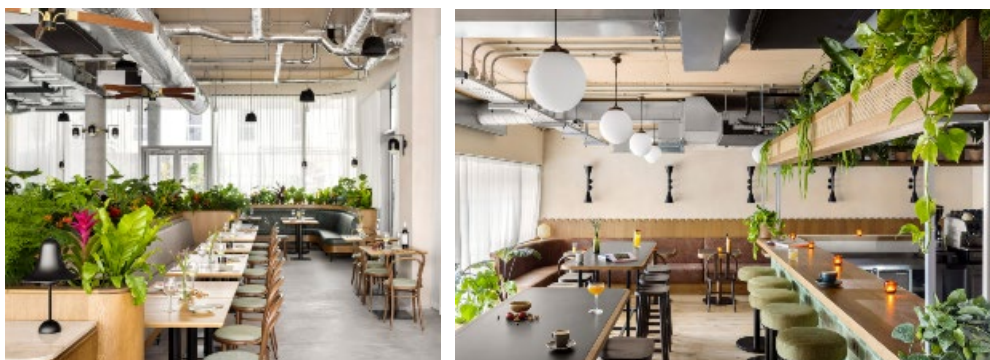
Two-bedroom apartment and co-working area at Turing Locke.

Designed by Stirling Prize-winning architects dRMM, with interiors by the globally renowned design firm AvroKO's London studio, Turing Locke will channel its own distinct character and identity, while embedding forward-looking sustainable practices into the fabric of its design.

Taking inspiration from pioneering movements founded in Cambridge, the aparthotel is defined by a seamless combination of the traditional and avant-garde, blending mid-century design choices with modernist flares that are reflected in both the architecture and art that is found throughout the entire project.

The social spaces at Turing Locke are calm and cosy, with hints of green, teal and pink; meanwhile apartments are playful hues of pink and green with pops of striking terrazzo tiling and worktops.

Home to two innovative new food and drink hotspots, KOTA and Dutch.



Interiors of KOTA restaurant

Interiors of Dutch cocktail bar

Working with locally-renowned partners to create two new food and drink destinations – KOTA and Dutch – Turing Locke will firmly establish Eddington as the new hotspot in Cambridge, creating exciting opportunities for existing local businesses.

KOTA

At the heart of the hotel's atrium, KOTA specialises in boozy brunches, barbequed flavours, speciality coffee, botanical cocktails, and craft beer. The offering will spread throughout the day with fresh, bright brunches leading into light daytime dining, and a chargrilled evening menu complemented by botanical cocktails.

KOTA expands across three defined areas: KOTA coffee sits at the front of the courtyard garden, serving third wave coffee roasted in-house by London-based roasters Saint Espresso, plus juices, smoothies, and light bites. On the seasonal roof terrace, KOTA will showcase an innovative menu of herb, fruit, spice and bean cocktails, plus small plates, and nibbles.

KOTA is the new offering by the team behind the much-loved Cambridge institution, NOVI. It will be an extension of the existing brand with a focus on being independent, local, and environmentally conscious.

Dutch

As the second site for the owners of 196 Cocktail Bar on Mill Road, Dutch serve a range of expertly sourced spirits, wines and beers, alongside an extensive cocktail menu featuring classic favourites, inventive twists and new creations.

Dutch will also serve small plates and salads throughout the day, including locally sourced platters of British cheeses and cured meats and salads, tortillas and tapas-style nibbles.

High-spec co-working, meeting and events space for up to 150 guests.



Meeting room space and seasonal rooftop terrace at Turing Locke.

Two adaptable meeting rooms, spanning 44sqm and 24sqm, boast large windows and high-spec audio visual equipment for meetings, conferences, and events for up to 30 people. The seasonal roof terrace will also cater for larger events, hosting up to 150 guests for drinks receptions, presentations, networking, and many other social gatherings.

Guests and locals alike can take advantage of the tranquil complimentary co-working area, which offers high-speed Wi-Fi and plenty of charging points.

A locally led cultural programme, including a permanent art installation by Cambridge-based artist Fiona Curran.

A permanent art installation by local artist, Fiona Curran, emboldens the courtyard space and aims to connect the rich history of Cambridge with its progressive future.

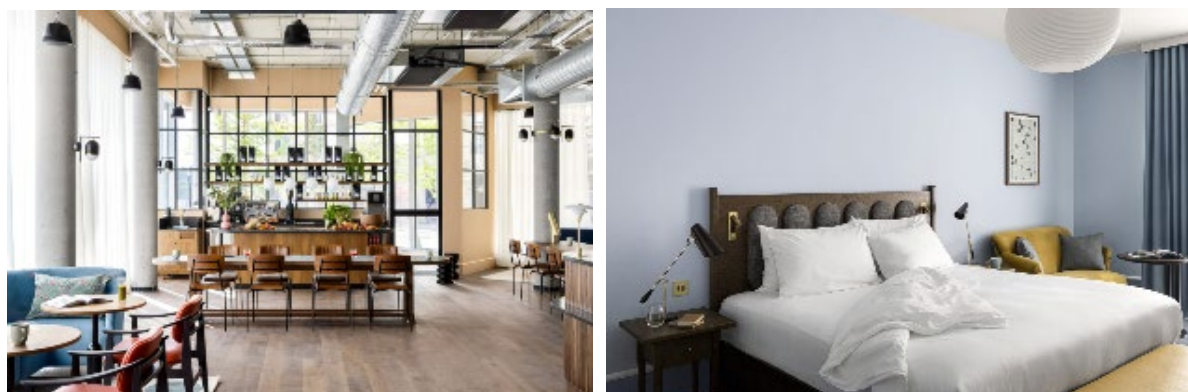
Using research by the Cambridge Archaeological Unit, 'Bright Shadows Point' is inspired by century-old artefacts excavated from former settlements in Eddington – including Roman, Medieval and Anglo Saxon. It also references photographs of a solar eclipse taken by astronomer, mathematician, and physicist Sir Arthur Eddington.

'Bright Shadows Point' has been commissioned by Locke in partnership with the Contemporary Art Society. The installation has been brought to life with research undertaken by the Cambridge Archaeological Unit at the University of Cambridge and the support of fabricators MDM Props and Architects dRMM.

Watch more on Fiona's inspiration and the research that the piece is rooted in [here](#).

The destination will also host an evolving cultural programming series, which will include regular talks, workshops, exercise classes and more, and will be available to attend to locals and visitors.

A shared development with the UK's first Hyatt Centric hotel.



Co-working area and coffee shop, and hotel room at Hyatt Centric Cambridge.

The destination is shared with the 150-room [Hyatt Centric Cambridge](#) – Hyatt's tenth hotel in the UK and the debut of its lifestyle brand Hyatt Centric in the country. The chic guestrooms mix understated grandeur with art deco touches, with warm mustard velvets combined with bold, calming blues and rich walnut wood touches. 57 guestrooms offer a stunning courtyard view, 30 of which are deluxe rooms offering an



even more spacious stay. Rooms include a selection of thoughtful amenities, featuring a flat screen television with Bluetooth capabilities, an alarm clock radio with Bluetooth pairing, Bee Kind bath amenities, cosy bathrobes and more.

Locke and Hyatt Centric Cambridge share the courtyard space and all communal areas, including the food and beverage offering at the hotel. One space, two unique hotel styles for guests to choose from.

Celebrate the opening of Turing Locke and Hyatt Centric Cambridge with a series of events from 4th – 10th October.

To celebrate the opening of Turing Locke, Hyatt Centric Cambridge, KOTA and Dutch, Locke will run a series of opening events during the week of 4–10th October. The line-up includes complimentary wine and beer tastings at KOTA, tequila and mezcal masterclasses at Dutch, daily Yoga and HIIT sessions, plus wildflower and houseplant workshops. For more details and bookings, see [here](#).

Room rates at Turing Locke start from £120 per night. Discounted rates are also available for mid- to long-stay guests.

Room rates at Hyatt Centric Cambridge start from £120 per night.

*To celebrate its arrival in Cambridge, Locke is currently running a special offer of **£80 per night** until 31st January 2022 with the promo code **HELLOCAMBRIDGE**.*

ENDS

About Locke

Please click [here](#) for press images.

Address: Turing Locke, 47 Eddington Avenue, Cambridge CB3 1SE. You can find more information on Turing Locke [here](#).

Locke believes that life shouldn't stop when you're away from home, giving guests the freedom to travel on their own terms by creating spaces that are designed to be lived in. Locke aims to inspire and connect travellers through mindful design, activated social spaces, a locally led cultural programme and disruptive food and drink concepts that celebrate the character and social fabric of each locality.

Locke's signature studio apartments feature fully fitted kitchens, living and working space that give guests more space and autonomy than the typical hotel room. The flexibility of the home-meets-hotel format appeals to a broad range of travellers across the leisure and business markets, for both extended and short stays.



Following the opening of its first location in 2016, Locke has expanded to include sites across the UK and across mainland Europe.

Follow @lockehotels on Facebook and Instagram.

For more information, please visit: www.lockeliving.com/en

For press enquiries, please contact: press@kuco.agency

About Hyatt Centric

Hyatt Centric is a brand of full-service lifestyle hotels located in prime destinations. Created to connect guests to the heart of the action, Hyatt Centric hotels are thoughtfully designed to enable exploration and discovery, so they never miss a moment of adventure.

Each hotel offers social spaces to connect with others in the lobby, meanwhile the bar and restaurant are local hot spots where great conversations, locally inspired food and signature cocktails can be enjoyed. Streamlined modern rooms focus on delivering everything guests want and nothing they don't. A passionately engaged team is there to provide local expertise on the best food, nightlife, and activities the destination has to offer.

Follow @HyattCentric on Facebook and Instagram, and tag photos with #HyattCentric.

For more information, please visit hyattcentric.com.

For press enquiries, please contact: Milica.ferreiradasilva@hyatt.com

About Eddington

Eddington is a new community setting the standard in sustainable living, delivered by the University of Cambridge. This visionary urban area will provide new homes, learning spaces, amenities, and green spaces, creating a vibrant environment for people to live, learn, and socialise in.

Eddington will secure the long-term success of the university by providing homes for its academic staff and students, to maintain its status as a leading academic institution on a global stage. The community is beautifully and innovatively designed, inspired by the architecture of the city and University of Cambridge.

The 150-hectare site will include:

- 1,500 homes for University and College key workers
- 1,500 homes for sale
- 2,000 post-graduate student bed spaces
- 100,000 square metres of research facilities
- A wide range of community facilities

Follow @Eddington_Camb on Twitter and Instagram

For more information: visit: www.eddington-cambridge.co.uk